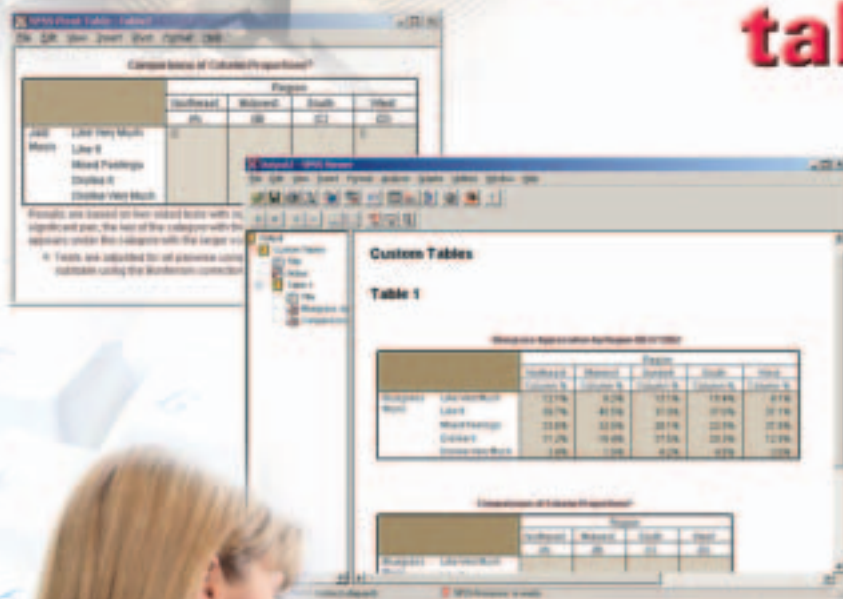


Create custom tables in no time



Ensure that others can use your analytical results with SPSS Tables, an SPSS® add-on module that enables you to create tabular reports from an interactive interface

SPSS®

Easily, quickly and clearly report results to the people who can use them

Once you have analysis, you often need to communicate your results to decision makers, colleagues, clients, grant committees or others. If you build tabular reports it's likely that your table-building process is tedious and time consuming. What if you could see your tables as you build them, rather than work with a trial-and-error process? What if you could easily add the type of information your audience needs to make decisions — and ensure that your table has a polished look? Imagine all the time you could save if you could know what your tables look like as you create them.

SPSS Tables 11.5, an add-on module for the SPSS product line, makes it easy for you to summarize your data in columns and rows for all kinds of audiences. Its build-as-you-go interface updates in real time, so you always know what your tables look like. You can include information, such as inferential statistics, and then customize the arrangement so the tables are easy for your audience to understand. When your tables are complete, export them to Microsoft® Word or Microsoft® Excel and easily place them within a report.

SPSS Tables 11.5 is the ideal tool for anyone who creates and updates reports on a regular basis, including people working in:

- Survey research
- Market research
- Social sciences
- Database and direct marketing
- Institutional research

SPSS Tables is newly enhanced for SPSS 11.5 with frequently requested features* that empower you to:

- See your tables as you create them, using an interactive table preview builder
- Reveal more about your table with category management features to display information the way you want
- Add even more insight to your tables using inferential statistics
- Export your results to Word or Excel for easy report deployment

Experienced and new users alike will appreciate how SPSS Tables 11.5 makes it easier to create and work with tabular reports.

“ I really like the new version of SPSS Tables. The new interface is clear and easy to use; it makes setting up reports very easy. Also, SPSS' ability to export data into other software formats will increase my productivity. ”

– Nancy L. Leech, Ph.D.
Assistant Professor
School of Education,
University of Colorado
at Denver

Use your SPSS data to build the right report the first time

Preview tables as you build them

SPSS Tables 11.5's intuitive graphical user interface (GUI) empowers you to visualize your tables as you build them. The drag-and-drop interface and preview pane take the guesswork out of table building, so you can see what your tables will look like before you click the "OK" button.

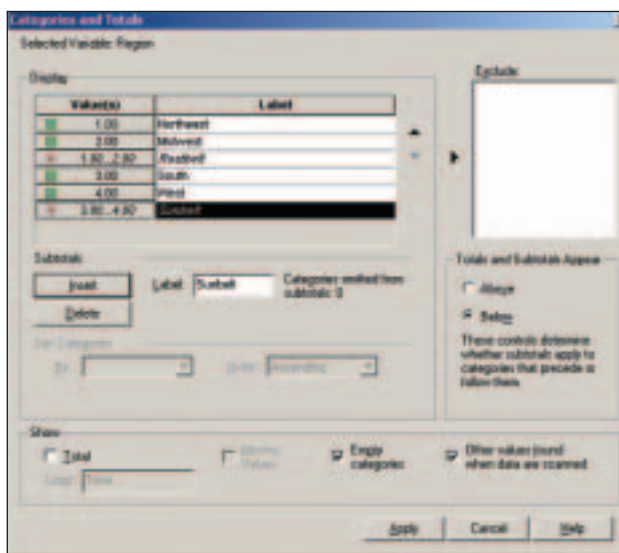
It's easy to create a table with the interactive GUI. When you bring your SPSS data into SPSS Tables, you interact with your variables onscreen. From there, you can identify variables as categorical or scale, and immediately know how your data are structured. You can even change the variable type with a simple mouseclick.

Starting a table is easy. Just drag your desired variables and drop them into the table preview builder. You don't have to write complicated syntax or work with unwieldy dialog boxes. Easily move variables from row to column in the builder for precise positioning. Every time you make a change, the table structure updates in real time — so you can immediately see how your change affects the table. You can also add, swap and nest variables or hide statistic labels directly from the table preview builder. And you can collapse large, complex tables for a more concise view and still see your variables.

Customize your table structures

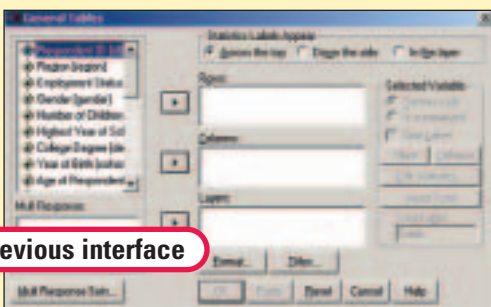
Display information the way you want when you use the category management features in SPSS Tables 11.5. Create totals and subtotals without changing your data file. For example, you can combine several categories into a single category for the commonly used top-box and bottom-box analyses.

Present data more effectively by changing variable types or excluding categories from your tables, as you create them. You can display or exclude categories with no counts for clearer, more concise output. Or sort and rank categories based on cell values for a neater, more informative appearance.



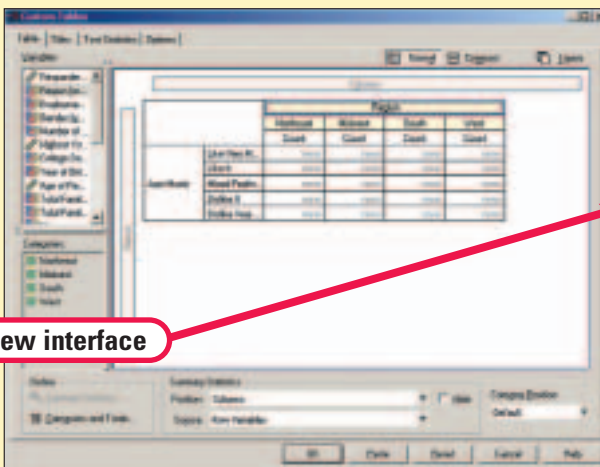
Easily insert subtotals into your tables to make it easier for report readers to understand results. In this entertainment study example, the user inserts the subtotal for the Sunbelt region in a table showing, by region, people who prefer jazz music.

Table preview builder



The drag-and-drop table preview builder in SPSS Tables 11.5 replaces the dialog-box interface used in previous versions of SPSS Tables. Compare the previous interface, shown to the left, with the new interface in the screenshot below.

Previous interface



New interface

Know more about your table with the new, drag-and-drop table preview builder. Your variables and categories are always displayed at the left. Drag and drop variables onscreen and position them where you want them. And know what your table looks like before you click the "OK" button.

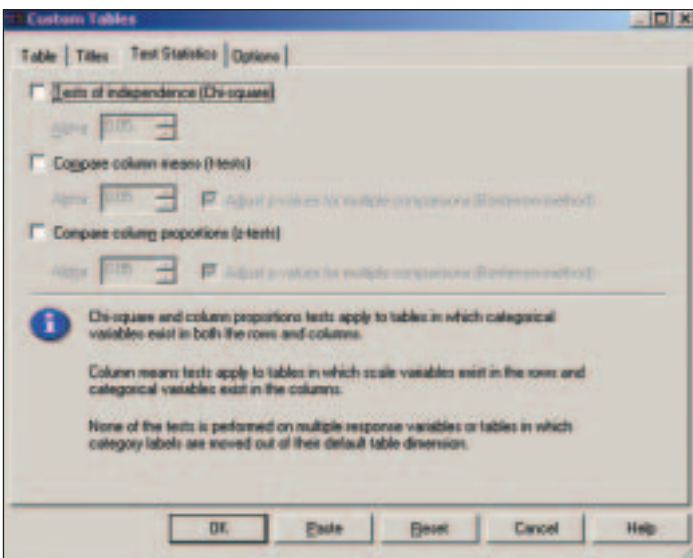
Result

		Region					
		Midwest	Midwest	Midwest	South	West	Sunbelt
		Count	Count	Count	Count	Count	Count
Jazz	Like Very Much	31	31	62	22	34	96
Music	Like It	40	78	124	89	56	122
	Mixed Feelings	25	58	93	64	34	90
	Dislike It	11	38	60	76	20	95
	Dislike Very Much	7	18	17	11	8	17

Here's the resulting table from the table preview builder. Before clicking the "OK" button, apply the optional TableLooks™ for a more polished appearance.

Get in-depth analysis

Give your readers the kind of reports that enable them to dig deeper and make more informed decisions. Highlight opportunities or problem areas in your results when you include one of three inferential statistics. Using inferential stats with SPSS Tables 11.5 empowers you to compare means or proportions for demographic groups, customer segments, time periods or other categorical variables. Identify trends, changes or major differences in your data. For example, a market researcher at a textbook publishing company studies student ratings of college textbooks. He notices there may be a relationship between students at private universities and low ratings for math textbooks. The researcher runs a columns proportion test with SPSS Tables. The test shows, at a 95 percent confidence level, that there is a difference in low math textbook ratings between private-university students and public-university students. Knowing that the confidence level for this difference is high, and it's likely that the relationship isn't due to chance, the researcher recommends that the publishing company further explore why this difference exists.



Use inferential stats with SPSS Tables and give your report readers in-depth information.

You can also select from a variety of summary statistics for cell calculations or summarizations, including maximum, minimum, median and mode, for other types of analysis.

Control your output before you execute

Many features in SPSS Tables 11.5 help you more easily create tables with the look you want and the timesaving capabilities you need:

- Use table expressions as titles in automatic titling
- Add titles and captions
- Use SPSS Base features, such as the ability to apply TableLooks (or create a custom TableLook and save it for future use) and scripts, to automate formatting and redundant tasks
- Specify minimum and maximum column widths for individual tables during table creation

		Region			
		Northeast	Midwest	South	West
		(A)	(B)	(C)	(D)
Jazz Music	Like Very Much	C			C
	Like It				
	Mixed Feelings				
	Dislike It			A B D	
	Dislike Very Much				

Results are based on two-sided tests with significance level 0.05. For each significant pair, the key of the category with the smaller column proportion appears under the category with the larger column proportion.

* Tests are adjusted for all pairwise comparisons within each innermost subtable using the Bonferroni correction.

The results of this column proportions test show the relationship and the degree to which people like or dislike jazz music. For example, the percentage of people who like jazz very much is significantly greater in the Northeast than in the South.

More easily share results with others

Once you have results, you need to put them in the hands of those who need them. SPSS Tables 11.5 creates results as interactive pivot tables, which enable you to export results to Word or Excel. This ability improves your workflow by taking into account that, many times, you need to include your SPSS results in a Word or Excel file. And it saves time — you don't need to reconfigure your tables once they're in Word or Excel. In fact, no additional table editing is required after you export them. You can, however, insert any additional content you want to describe your tables. For example, export your SPSS Tables results into Word as part of a comprehensive marketing report on brand awareness.

Save time and effort when you automate frequent reports

Do you regularly create reports in which the structure doesn't change? Before running new data, do you spend a lot of time recreating reports that you already built? Use syntax and automation with SPSS Tables to run frequent reports, such as the compliance reports required for grant funding, in a production mode.

When you create a table, SPSS Tables records every click you make in the GUI and saves your actions as syntax behind the interface. To run an automated report, simply paste the syntax that SPSS Tables recorded with the initial report to a syntax window. Click and go — with syntax and automation, your report will be ready without tedious and time-consuming report recreation.

Syntax in SPSS 11.5 uses a more natural language than syntax in other versions of SPSS Tables so it's easier to understand. This improved command syntax also saves time when you make minor changes in a production environment and gives you more flexibility to run many tables at once. Rest assured, syntax created in previous SPSS Tables versions will continue to work. If you want to take advantage of new features in SPSS Tables 11.5, such as inferential stats, simply use the included syntax converter (for upgrade users) to translate the original syntax to the new command syntax.

Create presentation-quality tables from your SPSS data in a snap

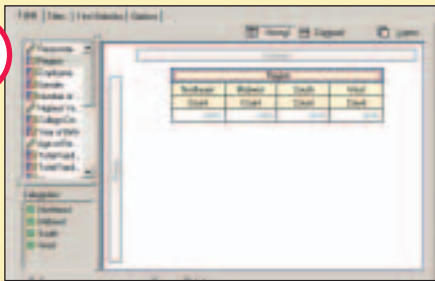
With SPSS Tables 11.5's intuitive user interface, it's as easy as 1-2-3 to create presentation-quality tables. The illustration below walks you through the steps and shows you just how easy it is.

Start

	id	region	employ	gender	child	adur
1	1	Northeast	Full Time	Female	2	12
2	2	Northeast	Part Time	Female	1	20
3	3	Northeast	Full Time	Female	1	20
4	4	Northeast	NA	Female	0	20
5	5	Northeast	Part Time	Female	0	12
6	6	Northeast	Part Time	Male	5	10
7	7	Northeast	Full Time	Male	3	10
8	8	Northeast	Part Time	Male	4	16
9	9	Northeast	Part Time	Female	3	10

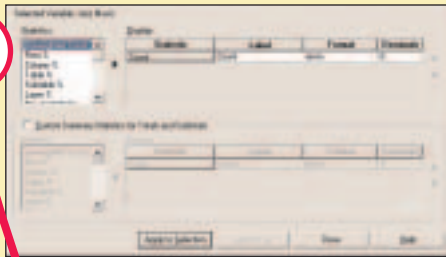
Start with your SPSS data.

1



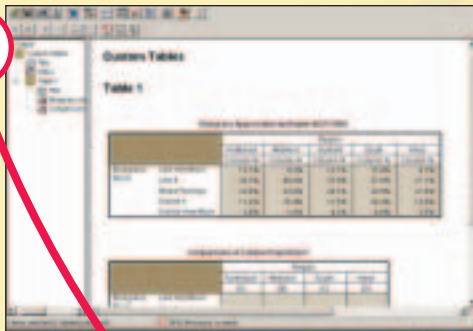
Drag and drop your variables onto the table preview builder and see what your table looks like as you create it.

2



Easily add to your table to show the information you need, such as summary stats (shown to the left), inferential stats and subtotals, and preview as you go.

3



Once your table is complete, push the "OK" button.

End



When your tables look the way you want them to, you can export them to Word or Excel. Your formatting remains intact and you can insert any additional content you want to describe your tables. This example shows a final report in Word.

“The new SPSS Tables interface is outstanding; creating complex tables is quick and very easy.”

– Bob Muenchen
 Manager Statistical Consulting Center
 University of Tennessee Office of Information Technology

Graphical user interface (GUI)

- Simple drag-and-drop table builder interface allows you to preview tables as you select variables and options
- Single, unified table builder instead of multiple menu choices and dialog boxes for different table types makes table-building easier

Control contents

- Create tables with up to three display dimensions: rows (stub), columns (banner) and layers
- Nest variables to any level in all dimensions
- Crosstabulate multiple independent variables in the same table
- Display frequencies for multiple variables side by side with tables of frequencies
- Display all categories when multiple variables are included in a table, even if a variable has a category without responses
- Display multiple statistics in rows, columns or layers
- Place totals in any row, column or layer
- Create subtotals for subsets of categories of a categorical variable
- Customize your control over category display order and selectively show or hide categories

Statistics

- Inferential statistics — statistical tests for tables that summarize scale variables
Stats included:
 - Chi-Square
 - Pairwise comparisons of means
 - Column proportions
- Select from these summary statistics: count, count row %, count column %, count table %, count subtable %, layer %, count table row %, count table column %, valid N row %, valid N column %, valid N table %, valid N subtable %, valid N layer %, valid N table row %, valid N table column %, total N row %, total N column %, total N table %, total N subtable %, total N layer %, total N table row %, total N table column %, maximum, mean,

median, minimum, missing, mode, percentile, percentile 05, percentile 25, percentile 75, percentile 95, percentile 99, range, S.E. mean, standard deviation, sum, total N, valid N, variance, sum row %, sum column %, sum table %, sum subtable %, sum layer %, sum table row %, sum table column %

- Calculate statistics for each cell, subgroup or table
- Calculate percentages at any or all levels for nested variables
- Calculate counts and percentages for multiple-response variables based on the number of responses or the number of cases
- Select percentage bases for missing values to include or exclude missing responses

Formatting controls

- Directly edit any table element, including formatting and labels
- Sort tables by cell contents in ascending or descending order
- Automatically display labels instead of coded values
- Specify minimum and maximum width of table columns (overrides TableLooks)
- Show a name, label or both for each table variable
- Display missing data as blank, zero, "." or any other user-defined term, such as "missing"
- Set titles for pages and tables to be multiple lines with left, right or center justification
- Add captions for pages or tables
- Specify corner labels
- Customize labels for statistics
- Display the entire label for variables, values and statistics
- Format numerical results: commas, date/time, dollars, F (standard numeric), negative parentheses, "N=", parentheses (around numbers of percentages), percentages and customized formats
- Apply pre-formatted TableLooks to results
- Define the set of variables that is related to multiple response data and save it with your data definition for subsequent analysis
- Accepts both long- and short-string elementary variables
- Imposes no limit on the number of sets that can be defined or the number of variables that can exist in a set

- All results are produced as SPSS pivot tables so you can explore your results more easily with the pivot feature
 - Rearrange columns, rows and layers by dragging and dropping icons for easier ad-hoc analysis
 - Toggle between layers by clicking on an icon for easier comparison between subgroups
 - Reset table to original organization with simple menu choice
 - Rotate even the outermost nests in the stub, banner and layer to uncover information that can be easily hidden in large reports

Syntax

- New, more natural syntax is easier to understand than syntax in previous versions
- Syntax reflects new controls and statistics
- Syntax converter (for upgrade users) translates syntax created in previous versions

Printing formats

- Print more than one table per page
- Specify page layout: top, bottom, left and right margins, page length
- Use the global break command to produce a table for each value of a variable when the variable is used in a series of tables

System requirements

- SPSS Base 11.5
- 3MB hard drive space
- Other system requirements vary according to platform

Learn more about SPSS

Contact your nearest SPSS office or visit us at www.spss.com.

SPSS Inc.	+1.312.651.3000	SPSS Denmark	+45.45.46.02.00	SPSS Italia	+800.437300	SPSS Singapore	+65.6346.2061
Toll-free	+1.800.543.2185	SPSS East Africa	+254.2.577.262	SPSS Japan	+81.3.5466.5511	SPSS South Africa	+27.21.7024666
SPSS Andino	+57.1.6358585	SPSS Federal Systems	+1.703.740.2400	SPSS Korea	+82.2.563.0014	SPSS South Asia	+91.80.2088069
SPSS Argentina	+54.11.4371.5031	Toll-free	+1.800.860.5762	SPSS Latin America	+1.312.651.3539	SPSS Sweden	+46.8.506.105.50
SPSS Asia Pacific	+65.6245.9110	SPSS Finland	+358.9.4355.920	SPSS Malaysia	+603.6203.2300	SPSS Taiwan	+886.2.25771100
SPSS Australasia	+61.2.9954.5660	SPSS France	+01.55.35.27.00	SPSS Malta	+356.21.322314	SPSS Thailand	+66.2.260.7070
Toll-free	+1.800.024.836	SPSS GmbH Software	+49.89.4890740	SPSS Mexico	+52.55.5682.8768	SPSS Turkiye	+90.216.4644806
SPSS Belgium	+32.16.317070	SPSS BI Greece	+30.10.6971950	SPSS New Zealand	+0800.943.276	Technologies4Targeting.com +44.1733 890790	
SPSS Benelux	+31.183.651.777	SPSS Hong Kong	+852.28119662	SPSS Norway	+47.22.99.25.50	In addition to these offices, SPSS has a worldwide network of distributors. Contact the SPSS office nearest you for assistance.	
SPSS Brasil	+55.11.5505.3644	SPSS Iberica	+34.902.123.606	SPSS Polska	+48.12.6369680		
SPSS Chile	+56.2.233.7499	SPSS India	+91.80.2088069	SPSS Russia	+7.095.125.0069		
SPSS Colombia toll-free	+01800.0914636	SPSS Ireland	+353.1.415.0234	SPSS San Bruno	+1.650.794.2692		
SPSS Czech Republic	+420.222.212.005	SPSS BI Israel	+972.3.6166616	SPSS Schweiz	+41.1.266.90.30		

About SPSS Inc.

SPSS Inc. (Nasdaq: SPSS), headquartered in Chicago, IL, USA, is a multinational computer software company providing technology that transforms data into insight through the use of predictive analytics and other data mining techniques. The company's solutions and products enable organizations to manage the future by learning from the past, understanding the present and predicting potential problems and opportunities. For more information, visit www.spss.com.

