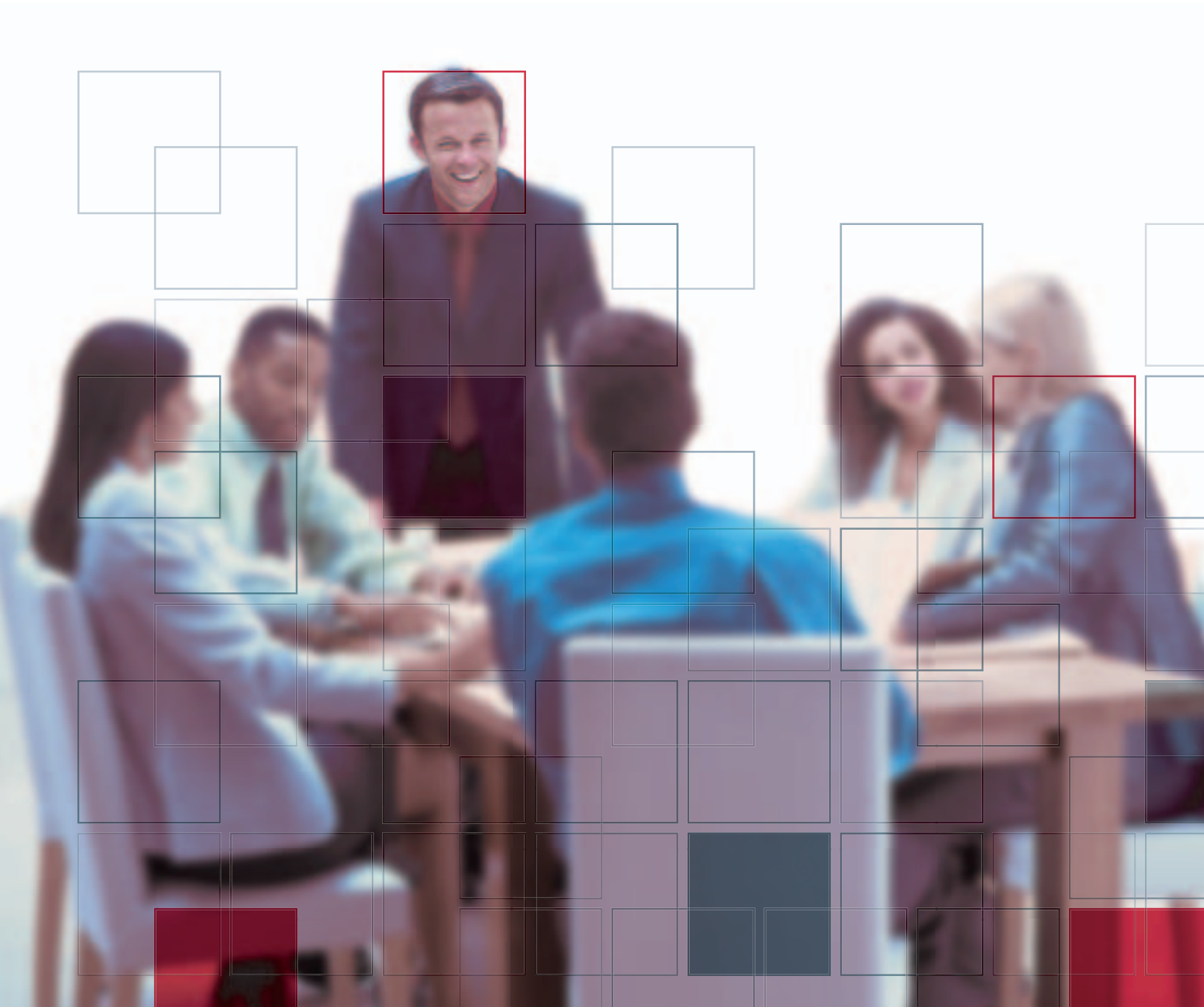


> Deploy SPSS Results Enterprise-Wide



> Improve decisions with interactive SPSS reports

What if you could easily share and review analytical reports in a Web environment? What if you could interact with those reports to immediately get the answers you need. Would you be able to make more informed, timely decisions?

SmartViewer Web Server, the content portal for SPSS products, enables you to make better decisions by sharing analytical information. Using SmartViewer Web Server, analysts publish reports from SPSS into a secure database. Then information consumers view the reports using a standard Web browser—no special downloads, plug-ins, or installations are required. And SmartViewer Web Server centrally stores all of your organization's analyses, including pivot tables, graphs, charts, OLAP reports, HTML content, and output from third-party products, such as Microsoft® Excel.™

Get instant results

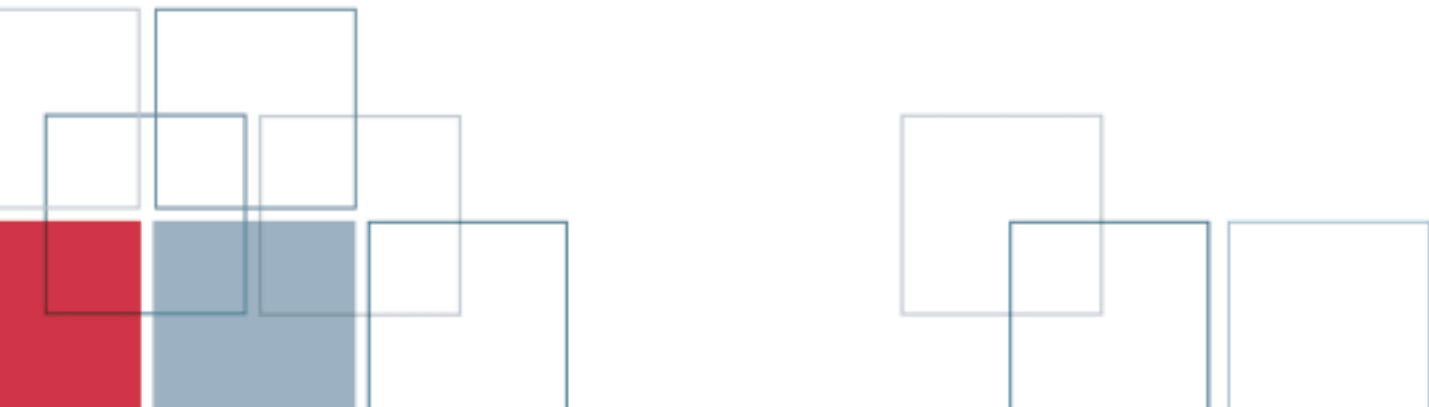
Now you can take action quickly using information from interactive reports that you access through your Web browser. SmartViewer Web Server eliminates the limitations of static, paper-based reports.

- No more searching through your files for the report you need—SmartViewer Web Server organizes all of your reports within a convenient home page. Customizable categories enable you to find what you need right away.

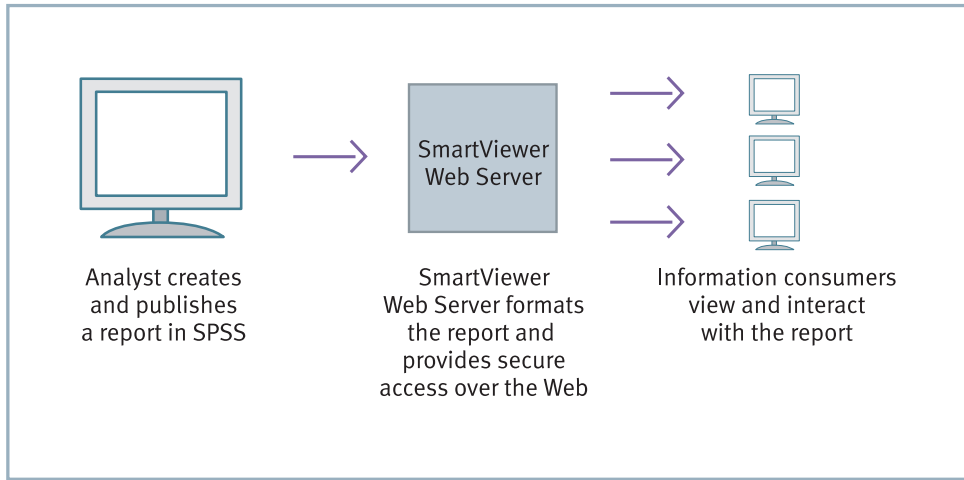
- No more waiting for someone to create new reports when you want different views of the information—SmartViewer Web Server's interactive tables enable you to pivot rows, columns, or layers, and drill down to see the results in more meaningful ways.

Easily share information

SmartViewer Web Server enables you to quickly and securely share important reports with anyone you choose. Keep business relationships running smoothly by sending critical information to partners, suppliers, and other colleagues via the Web. Make appropriate information available to customers, the public, and other groups in real time. SmartViewer Web Server handles internationalized output, so you can share documents across countries without losing important information. You can maintain consistency by developing report formats to match your organization's online "look" or branding. SmartViewer Web Server makes it easy for your Web team to create custom templates that enable you to deploy reports with different formats for different audiences.



■ The SmartViewer Web Server process



First, the analyst publishes a report. Recipients then access SmartViewer Web Server to view and interact with the results in their Web browsers to find the information they need.

Keep critical information secure

With SmartViewer Web Server, you decide who is authorized to publish, access, and interact with reports. Confidential, sensitive, or fee-based reports stay out of the wrong hands. Important information gets to the right people—on time. SmartViewer Web Server's flexible security modes—including native, LDAP, or Active Directory—enable you to share information in many different ways. You can set access rights for entire document categories and for individual documents, and decide whether to make documents available to entire groups or to restrict access to specific users.

Make reports accessible

SmartViewer Web Server comes with an optional user interface that is designed to be usable by persons with visual or motor skill impairments. The interface can be implemented by the system administrator for individuals and groups who require it. This optional user interface demonstrates SPSS Inc.'s commitment to the 1998 Amendment to Section 508 of the United States Rehabilitation Act and to making its technology more accessible.

Administrators—manage analytical reports

Manage security with a centralized system

SmartViewer Web Server makes it easy for you to maintain a secure report environment with Web-based administrative controls. Everything you need to manage the entire system is in one place. You can organize individual reports, categories, users, and user groups, and set access rights for individual users and user groups. Easily set viewing and publishing rights, monitor system activity, and much more. With SmartViewer Web Server, you can focus on analysis, not on administration.

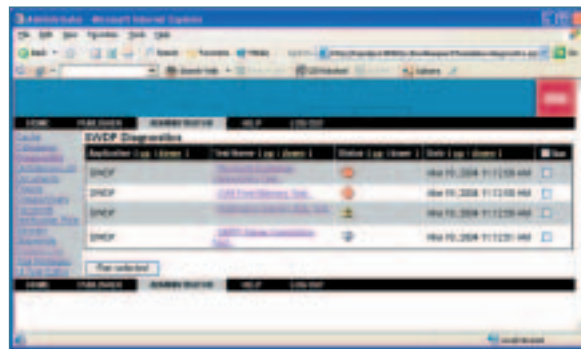
You can implement authentication security in several ways. Use the default native SmartViewer Web Server authentication system to create and organize users and groups. Other options are available by connecting to an Active Directory or LDAP server. You can also use mixed-mode authentication methods. Avoid recreating login and password information by linking to your organization's LDAP server. Then add accounts for customers, partners, and prospects to the native authentication system, so you don't have to include them on the LDAP server. Mixed-mode security allows any two (or all three) authentication systems to be active.

Easily customize reports

SmartViewer Web Server gives you a high degree of control over the look and feel of reports. You determine the degree to which end users can customize results. You have the flexibility to create a different look and feel for each user group. This capability is particularly valuable when two or more groups use a single installation of SmartViewer Web Server and want to view reports in different formats. These customization features enable you to extend your organization's online brand, while presenting information in a format that is familiar to different groups.

Empower decision makers

With SmartViewer Web Server's interactive features, analysts don't have to create a new report each time someone wants a new view of the information, because recipients can pivot and drill down into reports to find answers. And analysts don't have to create separate reports for different organizational areas—users can easily rearrange the analysis to find the information that is most pertinent to them. SmartViewer Web Server enables decision makers to independently find meaning and value in analytical reports.



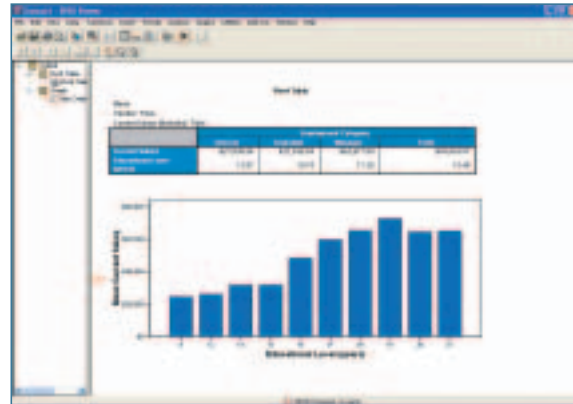
SmartViewer Web Server puts everything you need for report administration on one convenient page. Only you, the administrator, have access to this crucial command center. Control everything from user groups to report categories to online monitoring from this centralized location. SmartViewer Web Server makes administration easy, so you can focus on other tasks.

Find answers on demand

SmartViewer Web Server eliminates the frustrating “back-and-forth” of traditional static reports. You don’t have to wait for a new report when you want to see the information in a different layout or format. You can quickly get the information you need by interacting with the report.

“With SmartViewer Web Server, we quadrupled the output of reports from 10 to 40 per month, putting more information into our hospital administrators hands, and reduced report processing time from three weeks to one week, which freed up resources for additional projects.”

– Kim Carli
Project manager
University of Chicago Hospitals & Health System



Create interactive, static, or graphical reports using SPSS analytical output. Publish directly from SPSS to SmartViewer Web Server. Then, anyone with a Web browser, an Internet connection, and security access can view and interact with the reports.

Designed with IT in mind

SmartViewer Web Server minimizes the demands on IT departments and system administrators through its ease of administration, centralization, and minimal training and maintenance requirements.

Turn your Web page into a database

SmartViewer Web Server uses the extensible markup language (XML) for everything from data definition to document formatting. Supported by the World Wide Web Consortium (W3C), XML turns Web pages into databases by categorizing, or “tagging,” different types of data, so that they can be referenced and used in other documents.

Take advantage of the full security suite

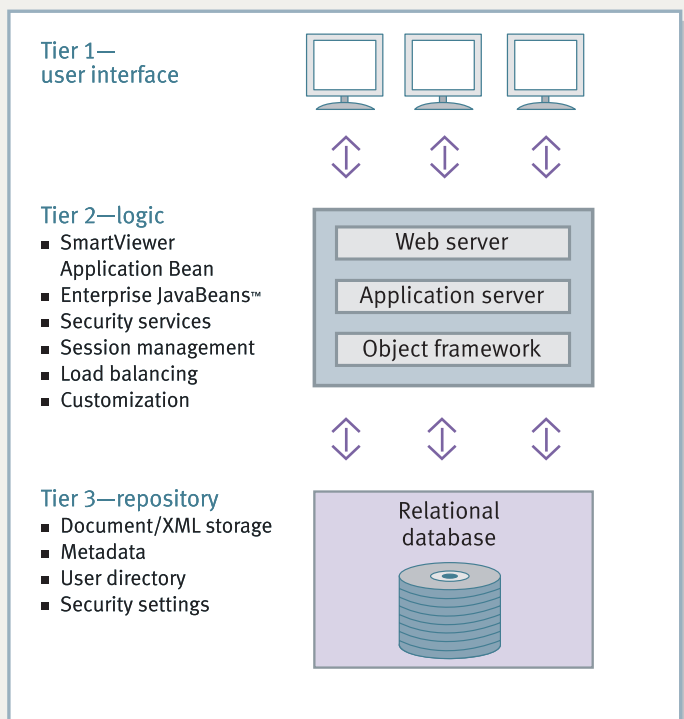
To protect your organization’s analyses, the SmartViewer Web Server security suite includes:

- **Authentication** — create user accounts and groups using SmartViewer Web Server’s native security, LDAP, an existing Windows Active Directory Service, or any combination of these authentication systems
- **Content authorization** — assign role- and category-based authorization at the group and user level with SmartViewer Web Server. Select who can view and publish documents and where those documents can be published.
- **Encryption** — SmartViewer Web Server supports the Secure Sockets Layer (SSL) protocol for greater document security (SSL certificate not included)

System requirements

- 1GB RAM
- Dual processors
- 700MB drive space for software; additional space is required for content and varies according to the number of reports published
- Operating systems: Microsoft Windows® 2000 Server, or Windows Server 2003; Sun™ Solaris™ 2.8 or higher
- Repositories: Microsoft SQL Server™ 2000 (included with SmartViewer Web Server 5.0 for Windows Server versions); Oracle9™ (not included with SmartViewer Web Server for Solaris)
- Web browsers: Microsoft® Internet Explorer 5.5 or higher (Windows); Safari 1.2 or higher (Mac OS X)

SmartViewer Web Server architecture



SmartViewer Web Server’s multitiered architecture is designed to distribute interactive, Web-enabled analytical content. SmartViewer Web Server’s architecture is based on Sun Microsystems’ Java™ 2 Enterprise Edition (J2EE™). J2EE is an industry-standard technology used to define and create multitiered applications in which a server handles all of the processing.



Please call Technologies4Targeting Ltd
+44 (0)1733 890790 or visit www.tech4t.co.uk/spss

SPSS is a registered trademark and the other SPSS products named are trademarks of SPSS Inc. All other names are trademarks of their respective owners.
© Copyright 2004 SPSS Inc. SVWS5BRO-0404